

FREEVIEWSHOP

Installation Instructions for the BBC World and Freeview Package

Step 1: Assemble Dish and Mount using instruction sheets supplied or look for the instructions here:

<http://www.freeviewshop.co.nz/forum/index.php/board,8.0.html>

Step 2: After assembling the dish, fit LNB to dish ensure the skew is as is shown for your LNB:



The C band LNB should be pushed forward as far as possible within the LNB holder and the offset scalar ring should be pushed back until it touches the LNB support arms. We recommend you drill a hole in the LNB at the lowest point to allow water to drain out. (Do this at the end incase the skew is changed a little later):



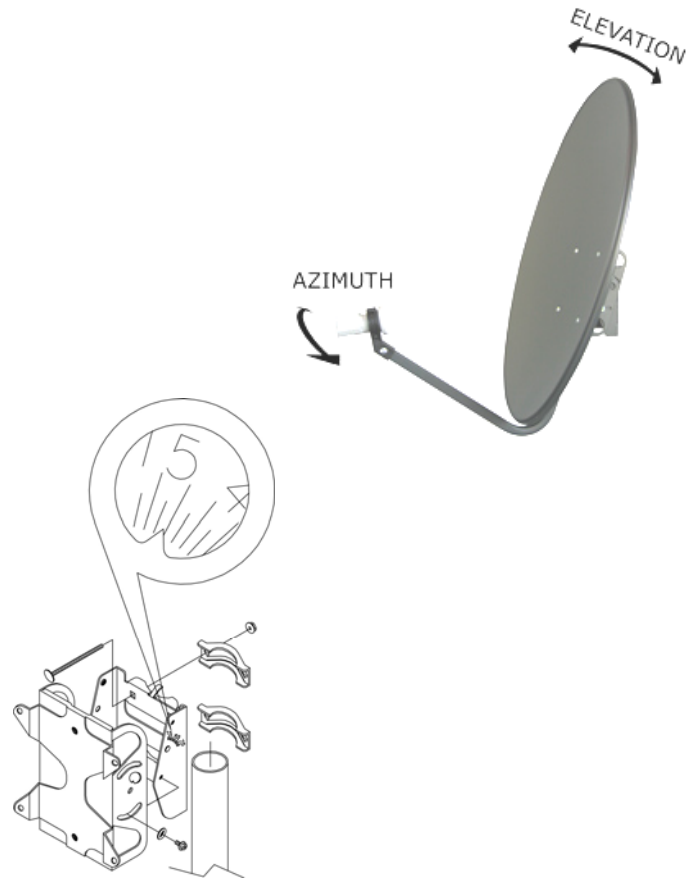
FREEVIEWSHOP

☎ 09-8175105

🌐 www.freeviewshop.co.nz
@ sales@freeviewshop.co.nz

Step 3: Set the gauge at the back of the dish to the **approximate** elevation given in the table below, Dishes are offset so that the LNB does not shadow the signal received:

Location	Elevation Sat	Azimuth (Compass)
Kaitia	49	334.2
Whangarei	48.1	332.2
Auckland	46.8	331.1
Thames	46.4	329.6
Hamilton	45.7	329.9
Rotorua	45.2	328.1
Gisbourne	44.2	325.1
Hastings	43.4	326.7
Palmerston North	42.8	328.4
Lower Hutt	42.0	329.2
Wellington	42.0	329.4
Picton	42.0	330.5
Nelson	42.1	331.7
Blenheim	41.8	330.5
Westport	41.7	334.1
Christchurch	39.7	331.3
Timaru	38.8	332.5
Oamaru	38	332.8
Dunedin	37.2	333.0
Invercargill	36.6	335.9
Stuart Island	35.9	336.4



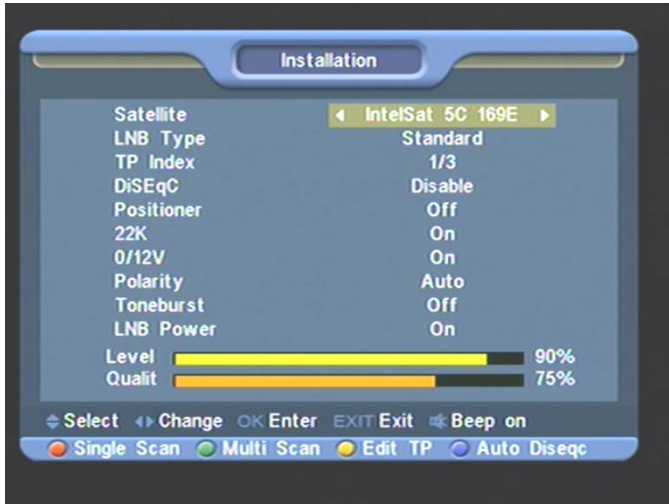
Step 4: Align the dish using a sat finder or the receiver as detailed below

To fine tune the dish alignment using the receiver. Connect to the Intelsat 5 dish only do not use the switch.

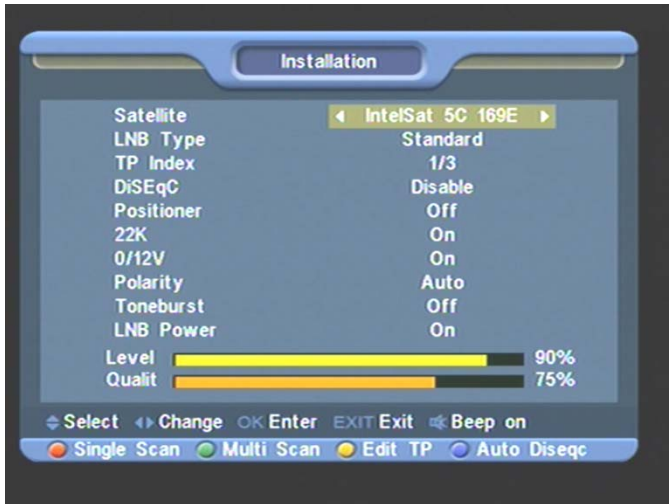
Press **MENU** on your remote control.



Scroll to Installation and press **OK**, press **OK** again. Select the Intelsat 5 satellite.



Move the dish until you get a lock on the satellite (The Quality will shoot up sharply when you find the satellite). This step may take some time. You should now optimize the Elevation and Azimuth of your dish and the Skew of the LNB to get the Quality indicator as high as possible.



Now Press Exit once more.

Your receiver is pre tuned so once you have finished you can just press exit a few times and proceed to watch BBC World and Australia Network

Step 5: Install the LNB for Freeview reception.

Install the Ku Band LNB to the left of the C Band LNB as pictured in the next image, set the skew of the LNB so the cable connects to the LNB at approx 8 o'clock. At this stage disconnect the C Band LNB and connect to the Ku Band LNB only.



You should mount the LNB back as far as possible for optimal reception. Once the LNB is mounted you can use a sat finder or the set top box (select the 12483MHz H Pol SR:22500 TP) to optimize the position of the LNB by rotating the offset scalar ring.

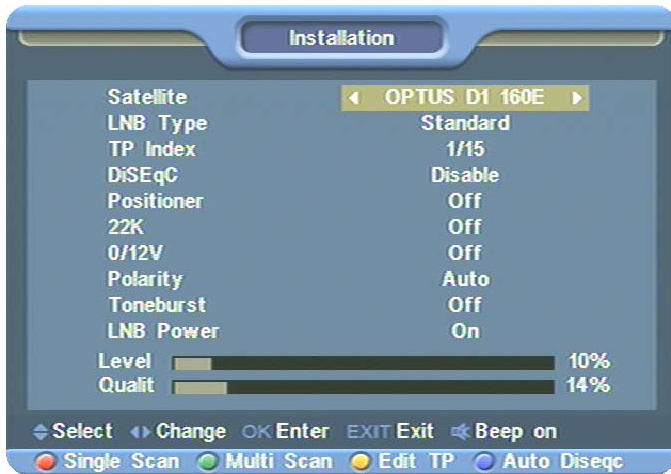


Step 6: Optimize the position of the Ku Band LNB by rotating the Offset Scalar Ring as detailed below (Or use a sat finder):

Press **MENU** on your remote control.



Scroll to Installation and press **OK**, press **OK** again. Select the OPTUS D1 Satellite.



Rotate the Offset Scalar ring to get the Quality indicator as high as possible.



Now Press Exit once more.

Your receiver is pre tuned so once you have finished you can just press exit a few times and proceed to watch Freeview.

Step 8: Install the 22KHz switch.

Connect the short cables from each LNB to the 22KHz switch, connect the Optus D1 (Ku Band) LNB to the OKHz or 22KHz Off side of the switch, connect the IS5 (C Band) LNB to the 22KHz on side of the switch.

Connect the long cable to the receiver to the receiver output of the switch

Now you will be able to watch both Freeview and IS5 channels.