

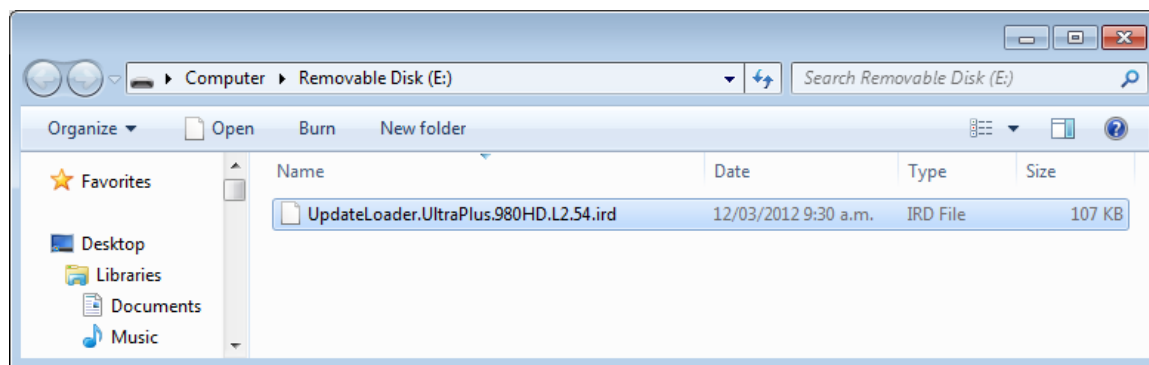
Firmware Upgrade Instructions: Upgrading the UltraPlus 980HD

The UltraPlus 980HD can be updated using firmware update files and a memory stick.

If you have any plugins installed you must format the User Data Area on the 980HD to remove these before starting update.

If you want to retain your channel and satellite configuration you can export your own channel data to a file by using MENU > System Tools > Data Transfer > Transfer Service Data to USB storage (Don't forget to press the red button afterwards to safely remove the device).

Download the Loader (UpdateLoader.UltraPlus.980HD.L2.54.ird) onto a blank USB Memory stick.



Once you have the UpdateLoader.UltraPlus.980HD.L2.54.ird file on you memory stick, insert the memory stick into the Ultraplus USB port.

Turn the Ultraplus off at the switch at the back.

Turn the Ultraplus on at the switch at the back while holding in the CH+ button on the front panel in while turning it back on.

Once you see SCAN USB on the Front Panel you can let go of the CH+ button.

You will then see reading from the USB Memory and then COMPLETE.

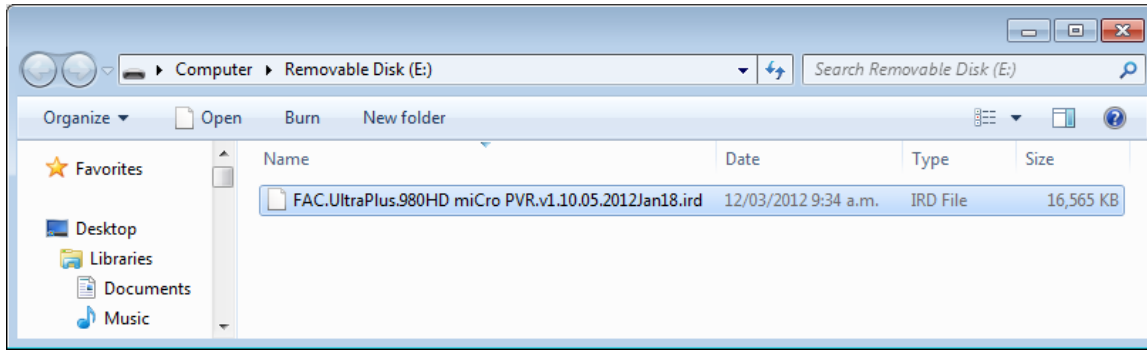
Once you see COMPLETE you can turn the Ultraplus off by the rear panel power switch.

Remove the memory stick from the Ultraplus.

Delete the UpdateLoader.UltraPlus.980HD.L2.54.ird on the memory stick using your PC.

Download the Firmware (FAC.UltraPlus.980HD miCro PVR.v1.10.05.2012Jan18.ird) onto the blank USB Memory stick.

Freeviewshop Technical Communication Datasheet



Once you have the FAC.UltraPlus.980HD miCro PVR.v1.10.05.2012Jan18.ird (or higher) file on you memory stick, insert the memory stick into the Ultraplus USB port.

Turn the Ultraplus on at the switch at the back while holding in the CH+ button on the front panel in while turning it back on.

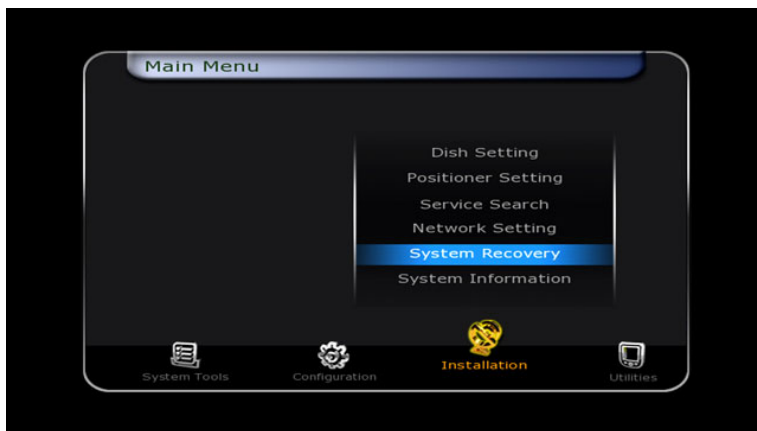
Once you see SCAN USB on the Front Panel you can let go of the CH+ button.

You will then see reading from the USB Memory then many erase and write processes then COMPLETE.

Once you see COMPLETE you can Turn the Ultraplus off by the rear panel power switch. Remove the Memory stick.

Turn it ON again via the rear panel power switch, you will then see UPGRADE_APP and an erase and write process then LOADING and the normal bootup sequence.

Now press the Menu button on the remote control and use the arrow keys to navigate to System Recovery and press OK.

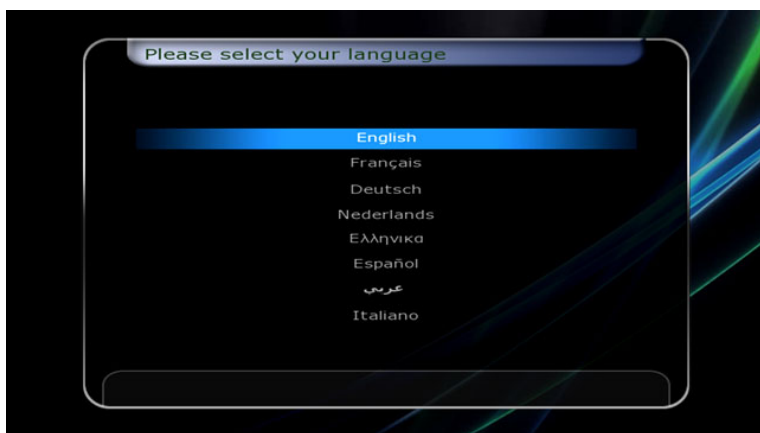


Freeviewshop Technical Communication Datasheet

Press the OK button on the remote control to restore to factory default and enter the PIN Code (Default: 0000)



Press the OK button to select English

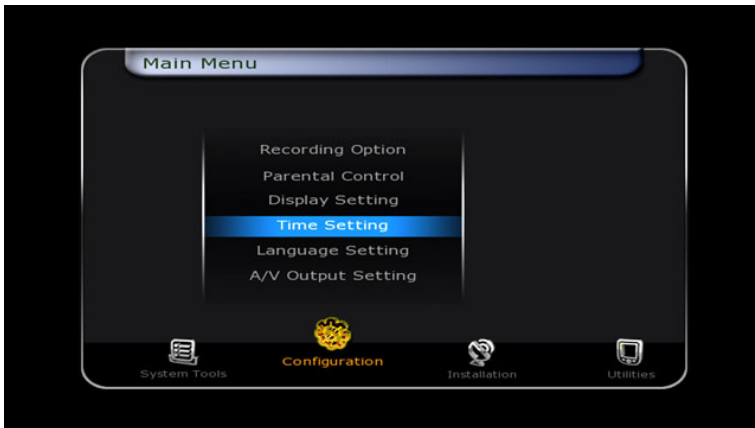


You will be asked if you wish to restore to stored position, use the < button to select Yes and press OK



Freeviewshop Technical Communication Datasheet

You will need to set the time for New Zealand after performing that step, to do that press Menu and navigate to Configuration and select Time Setting



You should select +12:00 for the Local Offset and New Zealand for Daylight Savings then Exit



If the channels are not in the correct order then press OK and then press the Blue button (for Service List option) Scroll to Local channel number and turn the setting to off. The channels will be in the correct order again.

