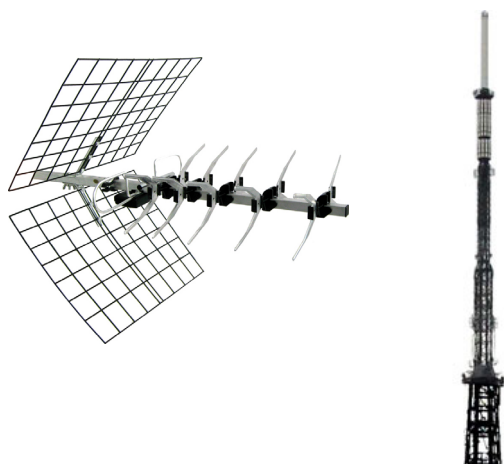


Installation Instructions: Setting up a UHF Aerial for Freeview HD reception

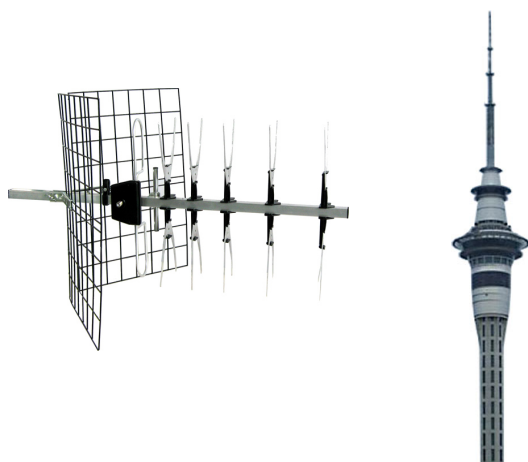
Step 1: Assemble the Aerial and Mount and point it at the transmitter you wish to use

You will need to make sure that the orientation of the aerial is correct for the transmitter you are using:

For Horizontal Polarization (e.g. Waiaatarua Transmitter)



For Vertical Polarization (e.g. Skytower Transmitter)



Site	Polarity
Waiaatarua Auckland	Horizontal
Pinehill Auckland	Horizontal
Remuera Auckland	Vertical
Sky Tower Auckland	Vertical
Auckland Infill	Vertical
Te Aroha Waikato/Tauranga	Horizontal
Hamilton Infill	Vertical
Kopukairua Tauranga	Vertical
Mt Erin Hawkes Bay	Vertical
Napier Infill	Vertical
Wharite Wellington	Vertical
Kaukau Wellington	Horizontal
Baxters Knob Wellington	Horizontal
Fitzherbert Wellington	Vertical
Wellington Infill	Vertical
Ngarara Kapiti	Vertical
Sugarloaf Christchurch	Horizontal
Mt Cargill Dunedin	Horizontal

Step 2: Connect the TV with Integrated tuner or terrestrial set top box as described in the User Manual, you should use RG6 Cable with 1x Belling Lee Male and 1 x PPC F-Type. It is very important to use a PPC F-Type connector to ensure the connection is waterproof if the Aerial is mounted outside. Connect and select the appropriate AV input on your TV (in the case of a STB. Use the Auto scan to tune in the Freeview HD channels for you.