

## Installation Instructions:

# Setting the UltraPlus HD receiver up with an existing satellite dish for Freeview reception.

The Receiver is pre configured for a Satellite Dish aimed at OPTUS D1 (Freeview and Sky).

Plug your set top box in and turn it on and select the appropriate AV input on your TV.

**NOTE: If you have a standard definition TV and the receiver is outputting a resolution the TV can't display you will see a message "Video output will not be available – resolution", press resolution on the remote control until the resolution changes to 576i and you can see a picture**

The UltraPlus HD PVR is pre configured for an 11300MHz L.O. LNB. If you see the "No Signal!" message when you select TV One and TV3 you probably don't have an 11300MHz L.O. LNB and should try changing the LNB L.O. freq to 10750MHz as shown below.

No Signal ( Tuner 1 )

The LNB at the left below has a L.O. of 10750MHz, if you have one of these you will need to take the steps shown on the next page:



10750 MHz



11300MHz



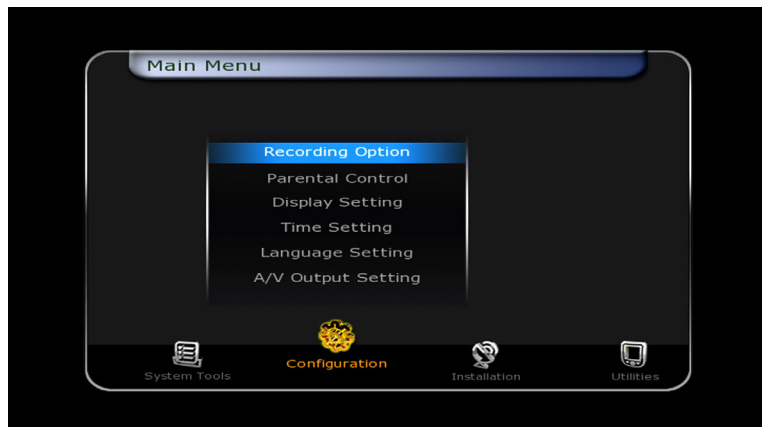
11300MHz

## How to change the LNB L.O. frequency to 10750MHz

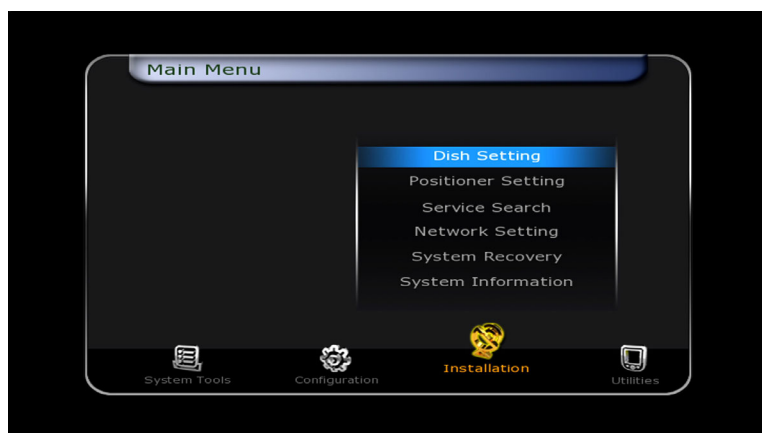
If you have the LNB shown on the left press **MENU** on your remote control then press **>** to select Installation.

## Freeviewshop Technical Communication Datasheet

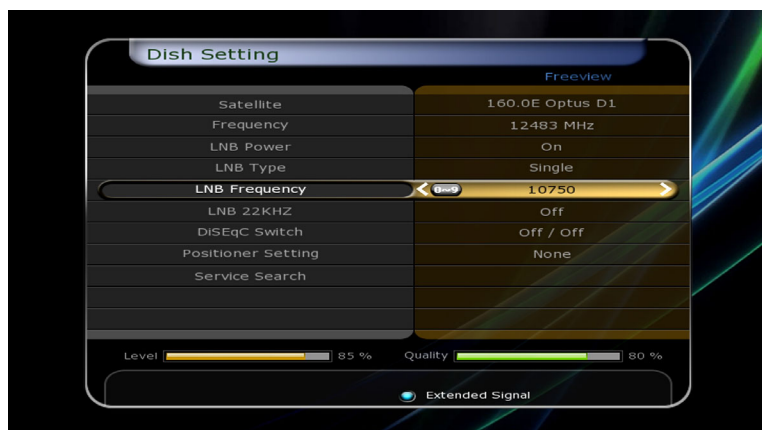
Once you have pressed **MENU** you will see:



Now select Dish Setting and press **OK**.



Scroll down and Select 10750 for the LNB frequency and press **OK**.



Once saved you can exit and watch TV.