

# FREEVIEWSHOP

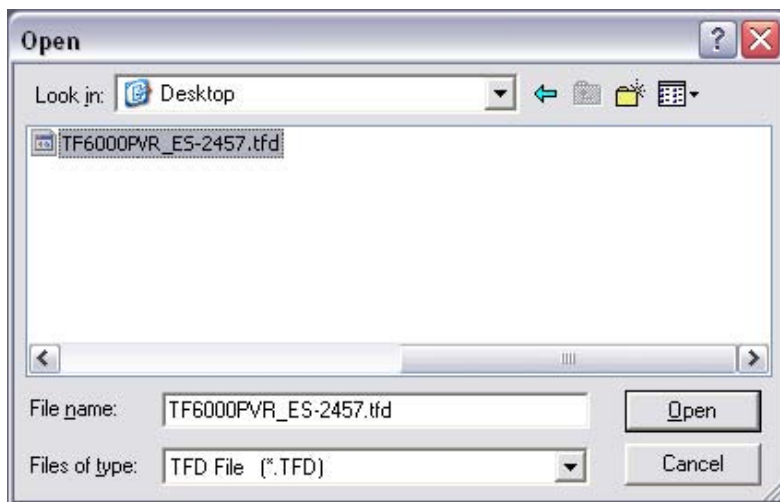
Firmware Upgrade instructions for the Topfield TF6000PVR ES.

Download the TFD-Down.exe and the TF6000PVR\*.tfd file, you will then be able to use TFD-Down and a Null Modem Cable to update the software:

Run TFD-Down.exe



Click Find and Select the TF6000FE\*.tfd file.



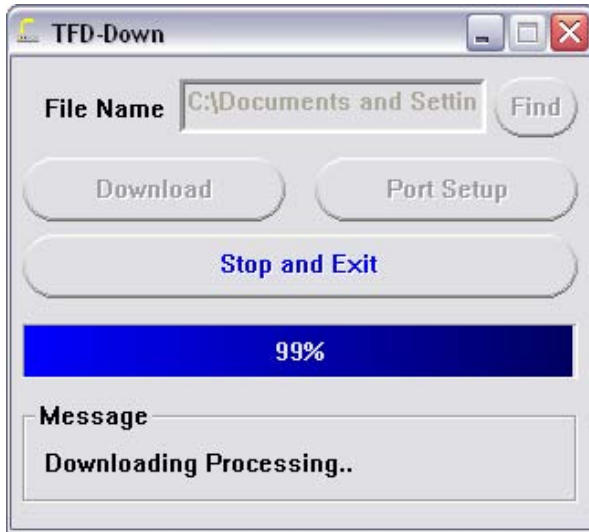
Click the Download Button



Turn your Set Top box on.



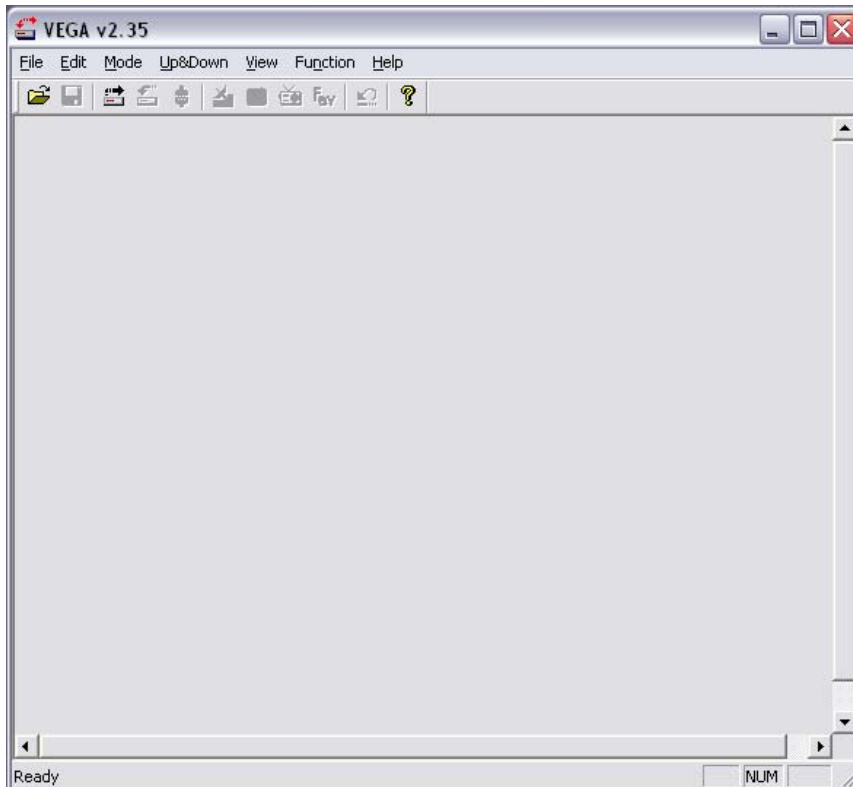
You will see the download progress.



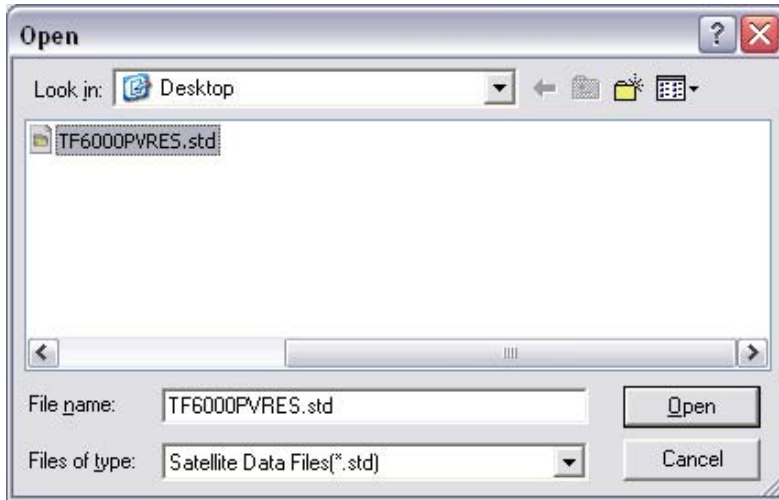
Once finished you will have updated the Firmware.

If you wish to update the channels download the Vega\_v2.35.exe and the TF6000FE.std file, you will then be able to use Vega and a Null Modem Cable to update the software:

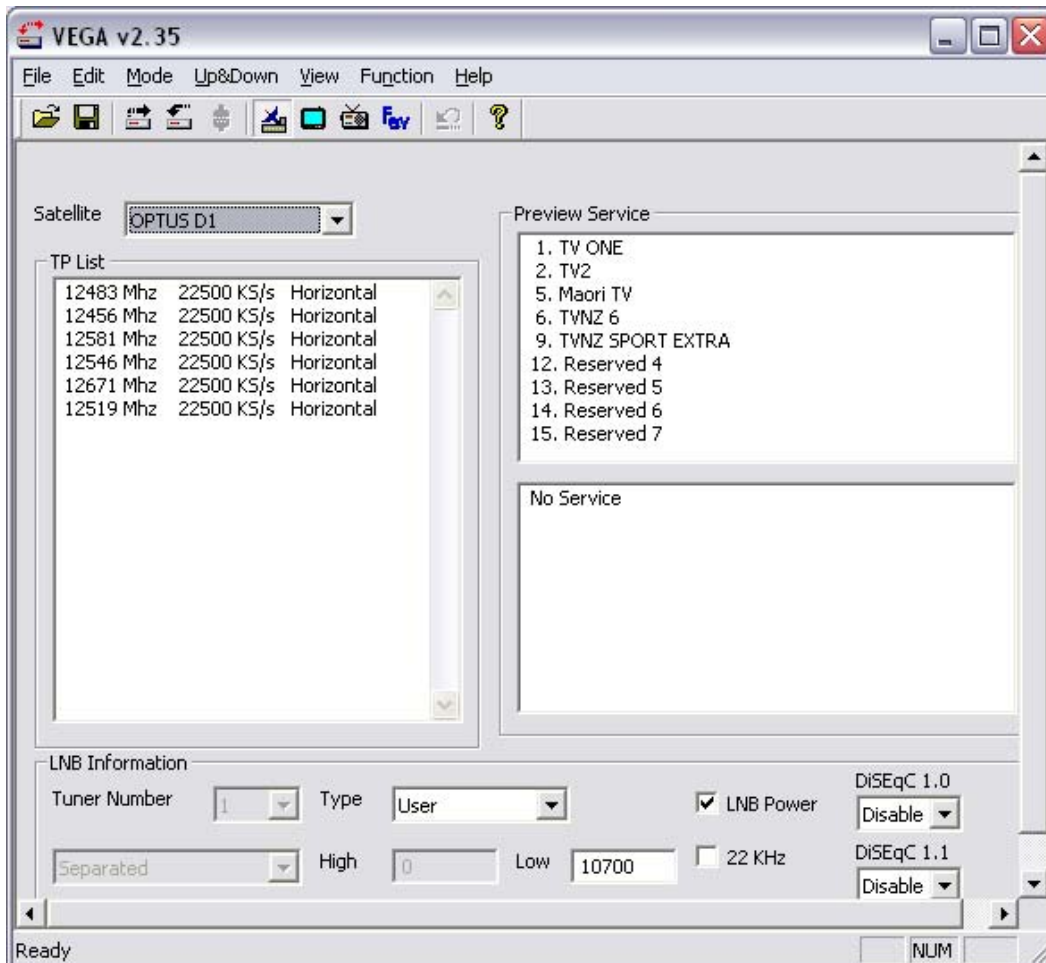
Run Vega\_v2.35.exe



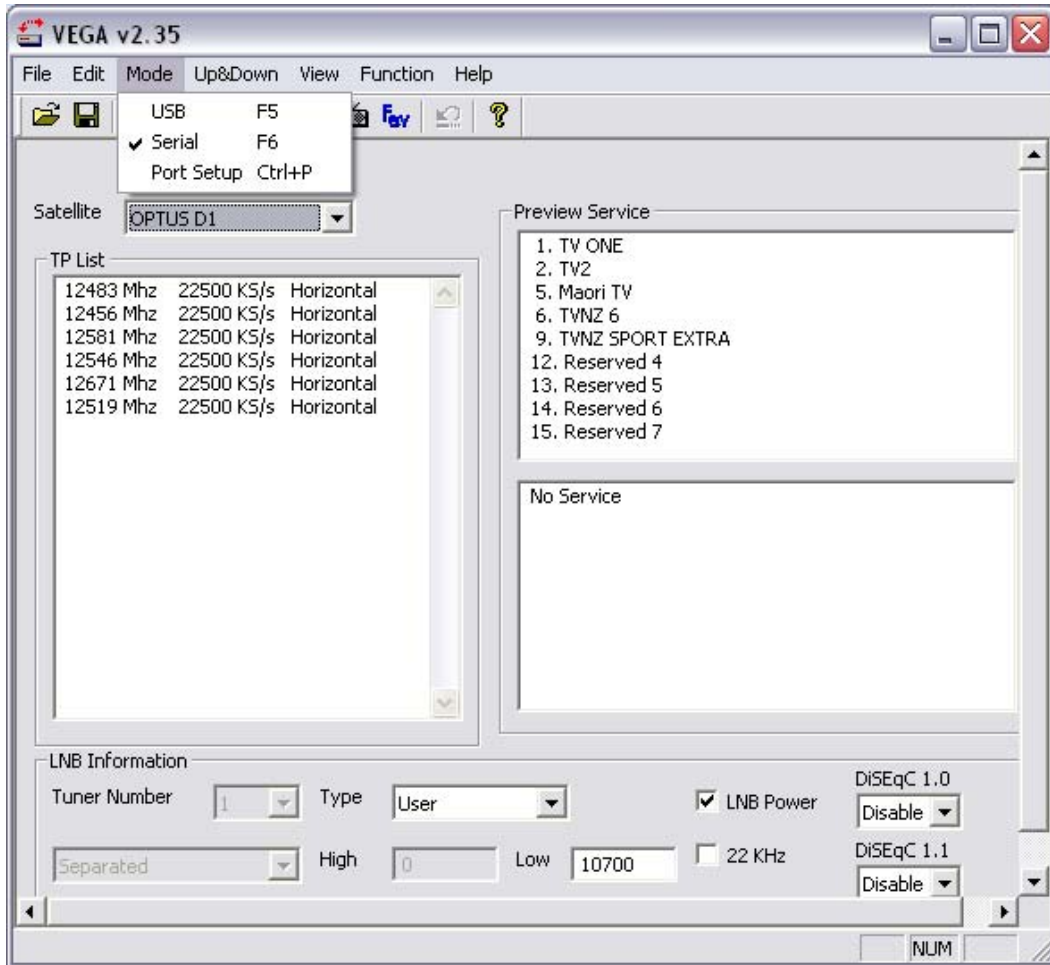
Click File->Open and select the TF6000PVRES.std file.



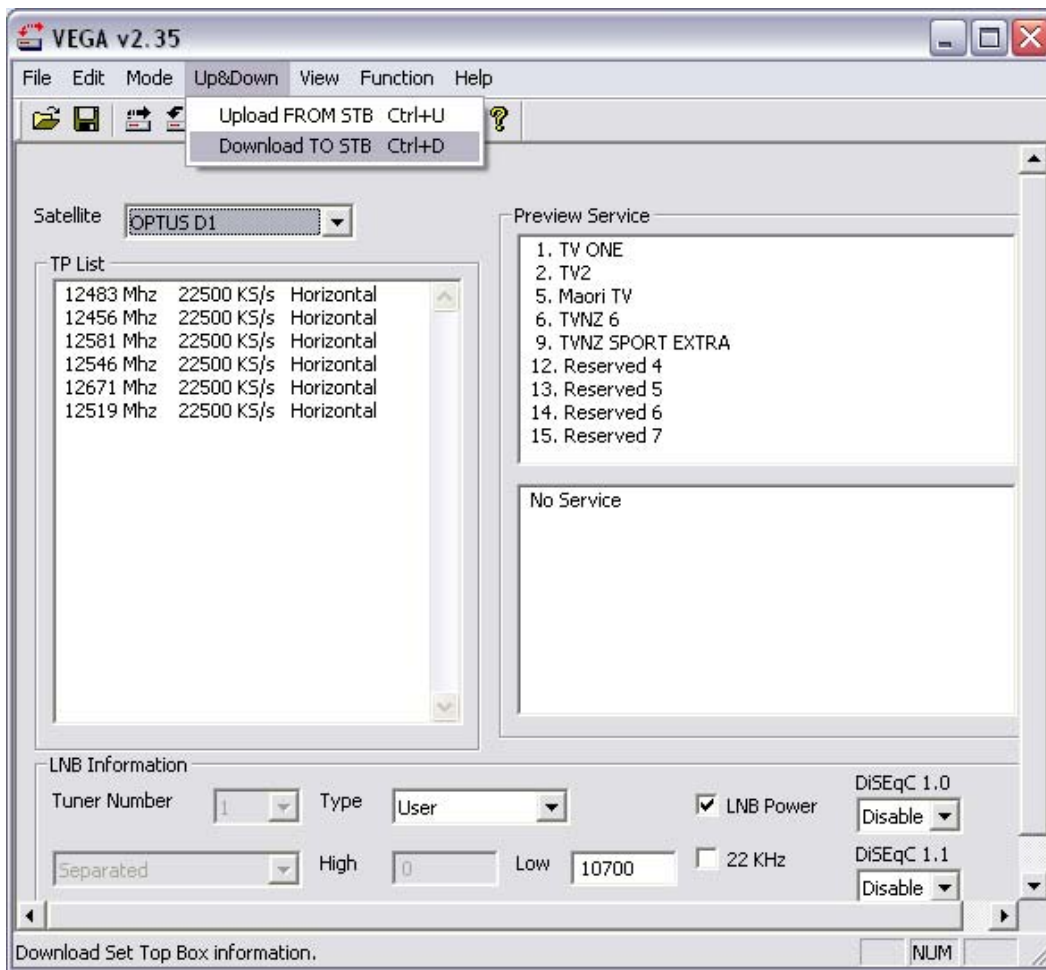
Once Loaded you can see the Satellites TP's and Channels as follows:



Change the Mode to Serial.



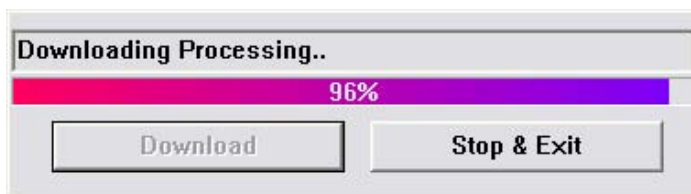
Download the Channel Data to the Set Top Box.



Click Download.



You will see the download progress.



Once complete you can reboot the Set Top Box.