

FREEVIEWSHOP

Setting the Topfield TF6000PVR ES up via USB.

The best way to do this is by downloading the Satellite and Channel configurations from a PC as satellites can not be added using the TF6000PVR ESs user interface.

Download the **TfBulk_USB_Driver.zip**, unzip it then plug the TF6000PVR ES in using a USB cable. Select No when asked if windows should use Windows Update.



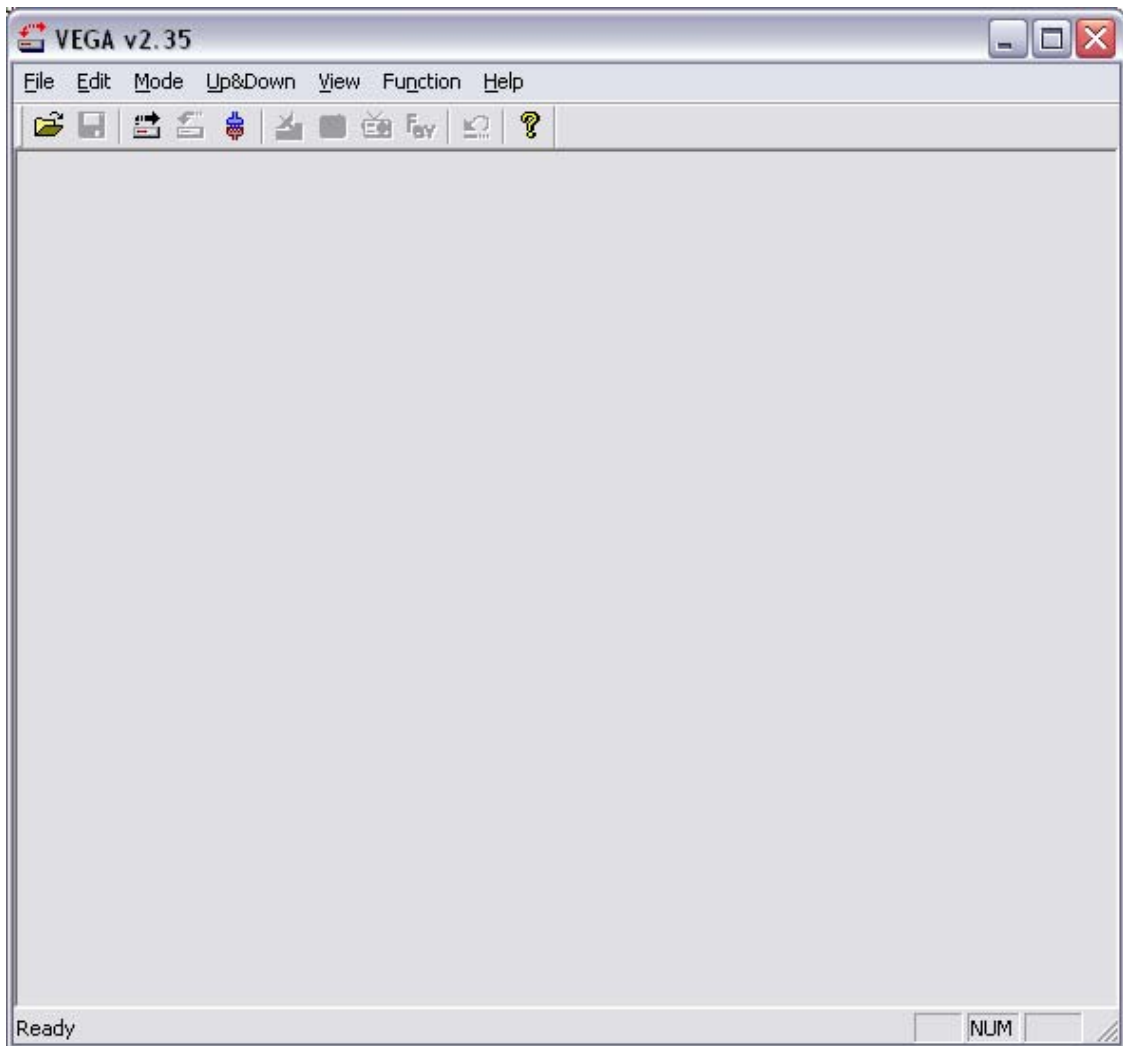
Select Install from a list or specific location and browse to the directory where you have unzipped the **TfBulk_USB_Driver.zip**.



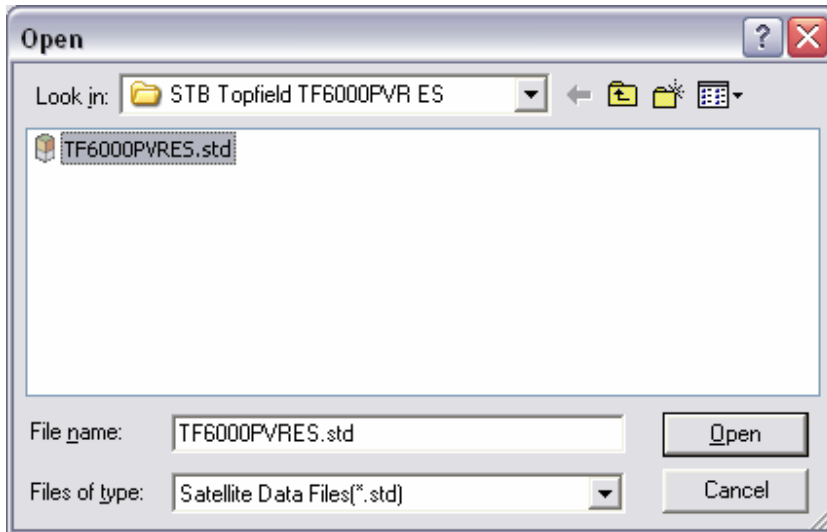
The TF6000PVR ES will be installed once you see the following dialog box.



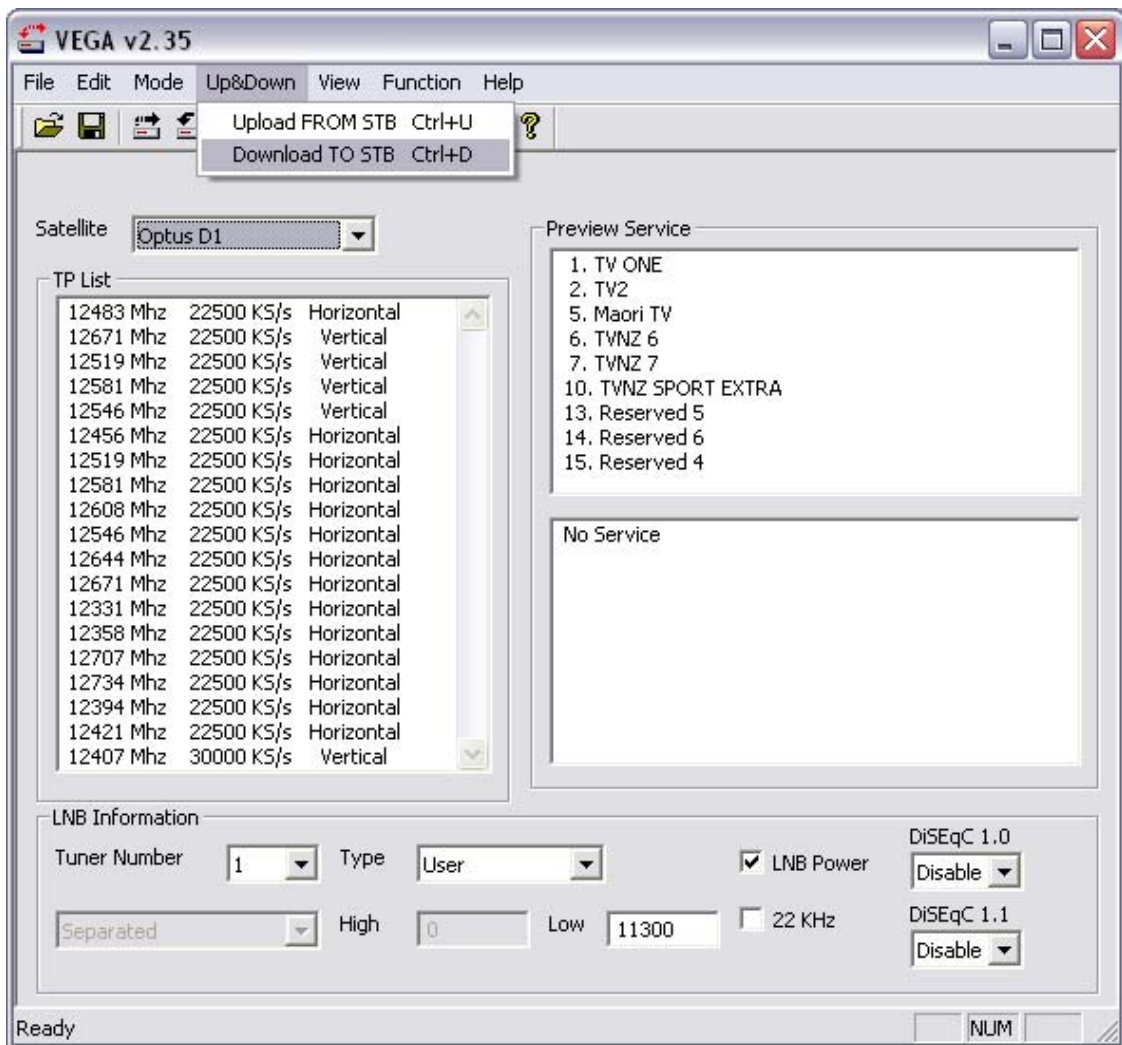
Now download **TF6000PVRES.std** and **Vega_v2.35.exe**, execute **Vega_v2.35.exe**.



Open the **TF6000PVRES.std** using VEGA.



Select Download TO STB from the Up&Down menu.



You will be asked to reboot your STB turn it off and on using the standby button.



Once the update is complete you will see the following dialog box.

