

FREEVIEWSHOP

Installation Instructions for using a Topfield TF6000PVR ES with an existing dish for Freeview reception.

The Topfield TF6000PVR ES is pre configured for a Satellite Dish aimed at OPTUS D1 (Freeview and Sky), Plug your set top box in and turn it on and select the appropriate AV input on your TV. The Topfield TF6000PVR ES is pre configured for an 11300MHz L.O. LNB. If you see the "E48-32 No Signal!" message when you select TV One and TV3 you probably don't have an 11300MHz L.O. LNB and should try changing the LNB L.O. freq to 10750MHz as shown below.

No Signal

The LNB at the left below has a L.O. of 10750MHz, if you have one of these you will need to take the steps shown below:



10750 MHz



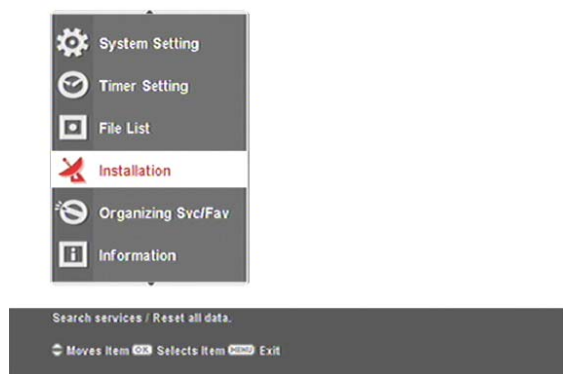
11300MHz



11300MHz

How to change the LNB L.O. frequency to 10750MHz

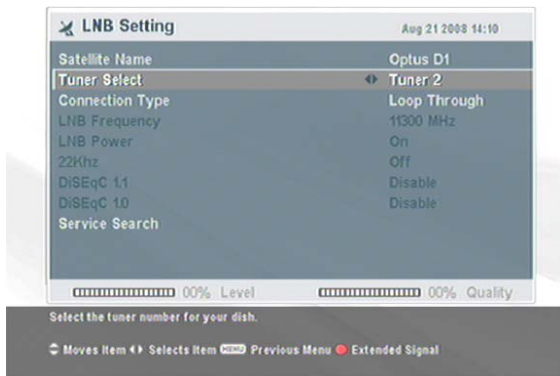
If you have the LNB shown on the left press **MENU** on your remote control and press **OK** to select Installation.



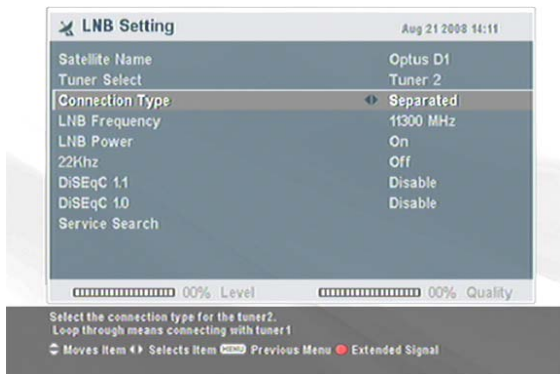
Press **OK** to select LNB Setting.



Select Tuner 2.



Change the Connection type to Separated.



Scroll to LNB Frequency and change it to 10750MHz by pressing >.



Now select Tuner 1 again and also change the LNB Frequency to 10750MHz.



Now select Tuner 2 and set the Connection Type back to Loop Through



Press **Exit** and enjoy watching TV.